

D – SUBMINIATURE GUIDE PIN PLATES (MALE)

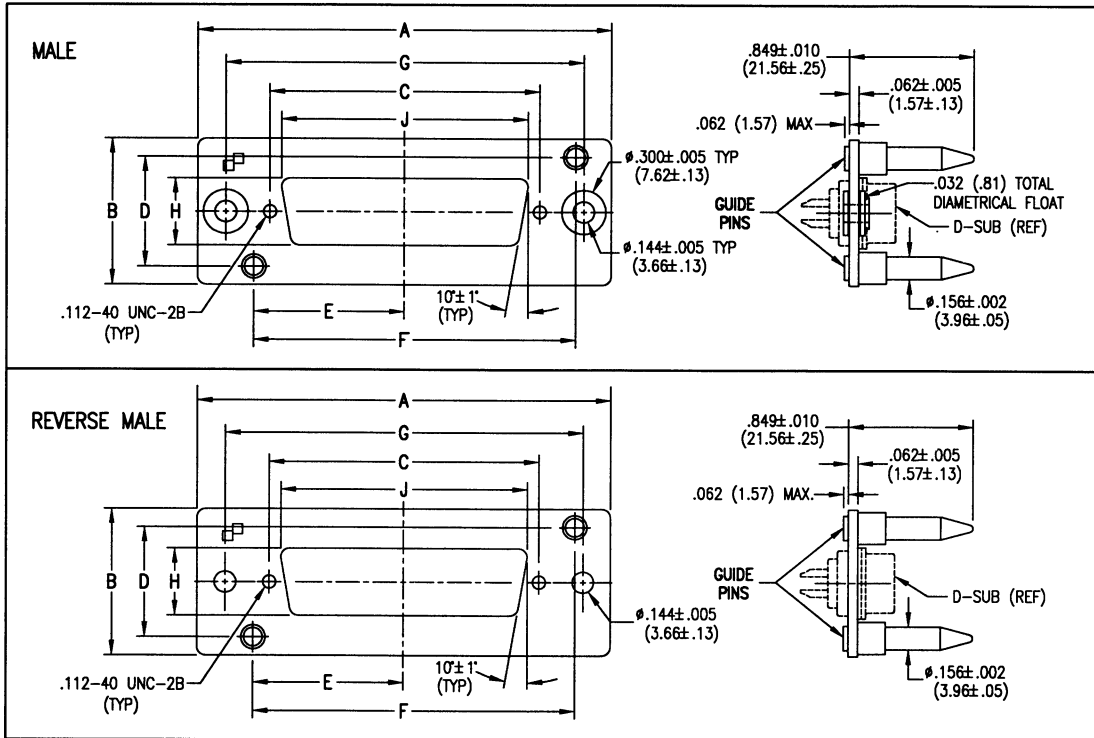
SPECIFICATIONS SUBJECT TO CHANGE WITHOUT NOTICE

MATERIALS

Plate: Cold Rolled Steel, No. 2 Temper, No. 4 Finish, per ASTM A 620.
 Washer: Cold Rolled Steel, UNS #G10080 through G10180 per ASTM A 109.
 Bushing: Cold Rolled Steel per ASTM A 108, SAE 12L14.

FINISHES/COLORS

Plate: Yellow Chromate over Zinc, Class SC2 per ASTM B 633.
 Washer: Yellow Chromate over Zinc, Class SC2 per ASTM B 633.
 Bushing: Passivate, Type IV, per QQ-P-35.



Shell Size	Part No.	Reverse Part No.	A	B	C	D	E	F	G	H	J
			±.015 (±.38)	±.015 (±.38)	±.005 (±.13)	±.003 (±.08)	±.005 (±.13)	±.003 (±.08)	±.005 (±.13)	±.005 (±.13)	±.005 (±.13)
E	PE22203	PE22203-9	1.953 (49.61)	1.000 (25.40)	.984 (24.99)	.750 (19.05)	.734 (18.64)	1.335 (33.91)	1.578 (40.08)	.458 (11.63)	.827 (21.01)
A	PA22213	PA22213-9	2.281 (57.94)	1.000 (25.40)	1.312 (33.32)	.750 (19.05)	.898 (22.81)	1.663 (42.24)	1.906 (48.41)	.458 (11.63)	1.153 (29.29)
B	PB22255	PB22255-9	2.820 (71.63)	1.000 (25.40)	1.852 (47.04)	.750 (19.05)	1.168 (29.67)	2.203 (55.96)	2.446 (62.13)	.458 (11.63)	1.695 (43.05)
C	PC22070	PC22070-9	3.468 (88.09)	1.000 (25.40)	2.500 (63.50)	.750 (19.05)	1.492 (37.90)	2.851 (72.42)	3.094 (78.59)	.458 (11.63)	2.342 (59.49)
D	PD21962	PD21962-9	3.375 (85.73)	1.125 (28.58)	2.406 (61.11)	.874 (22.20)	1.437 (36.50)	2.749 (69.82)	3.000 (76.20)	.569 (14.45)	2.248 (57.10)



THE PHOENIX COMPANY
of CHICAGO, INC.

Dimensions are subject to change without notice.

555 Pond Drive • Wood Dale, IL 60191-1192 • Toll Free (800)323-9562

D – SUBMINIATURE GUIDE PIN PLATES (FEMALE)

SPECIFICATIONS SUBJECT TO CHANGE WITHOUT NOTICE

MATERIALS

Plate: Cold Rolled Steel, No. 2 Temper, No. 4 Finish, per ASTM A 620.

Washer: Cold Rolled Steel, UNS #G10080 through G10180 per ASTM A 109.

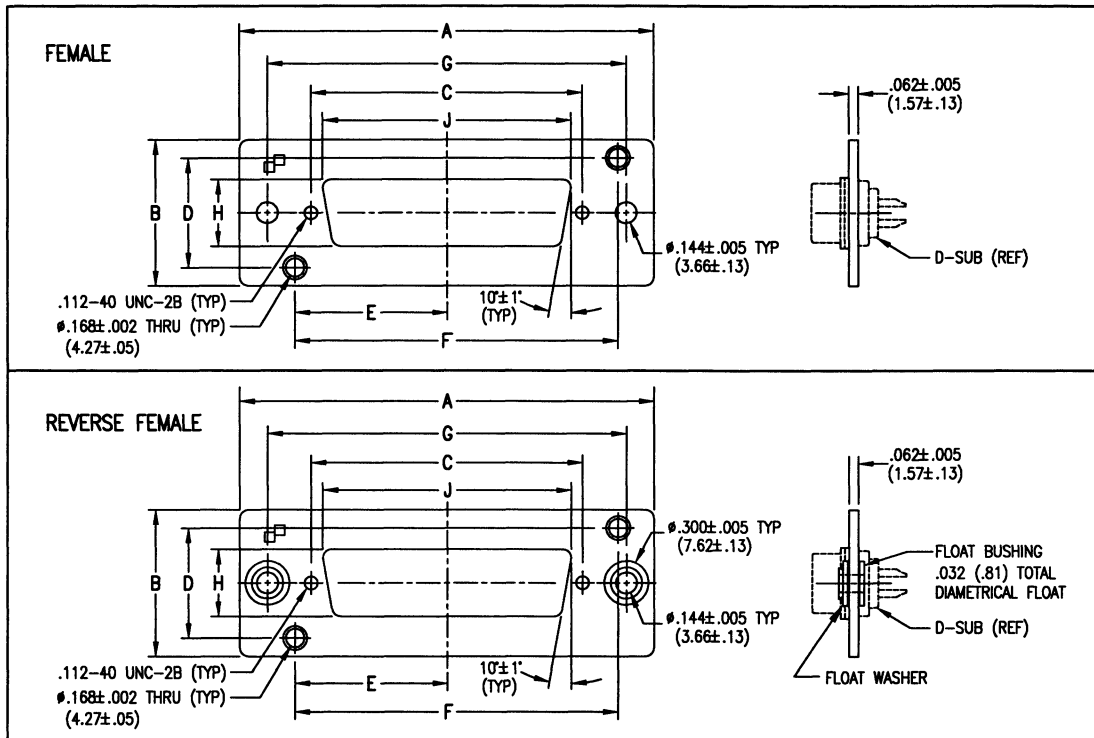
Bushing: Cold Rolled Steel per ASTM A 108, SAE 12L14.

FINISHES/COLORS

Plate: Yellow Chromate over Zinc, Class SC2 per ASTM B 633.

Washer: Yellow Chromate over Zinc, Class SC2 per ASTM B 633.

Bushing: Passivate, Type IV, per QQ-P-35.



Shell Size	Part No.	Reverse Part No.	A ±.015 (±.38)	B ±.015 (±.38)	C ±.005 (±.13)	D ±.003 (±.08)	E ±.005 (±.13)	F ±.003 (±.08)	G ±.005 (±.13)	H ±.005 (±.13)	J ±.005 (±.13)
E	PE22204	PE22204-9	1.953 (49.61)	1.000 (25.40)	.984 (24.99)	.750 (19.05)	.734 (18.64)	1.335 (33.91)	1.578 (40.08)	.458 (11.63)	.827 (21.01)
A	PA22214	PA22214-9	2.281 (57.94)	1.000 (25.40)	1.312 (33.32)	.750 (19.05)	.898 (22.81)	1.663 (42.24)	1.906 (48.41)	.458 (11.63)	1.153 (29.29)
B	PB22254	PB22254-9	2.820 (71.63)	1.000 (25.40)	1.852 (47.04)	.750 (19.05)	1.168 (29.67)	2.203 (55.96)	2.446 (62.13)	.458 (11.63)	1.695 (43.05)
C	PC22071	PC22071-9	3.468 (88.09)	1.000 (25.40)	2.500 (63.50)	.750 (19.05)	1.492 (37.90)	2.851 (72.42)	3.094 (78.59)	.458 (11.63)	2.342 (59.49)
D	PD21961	PD21961-9	3.375 (85.73)	1.125 (28.58)	2.406 (61.11)	.874 (22.20)	1.437 (36.50)	2.749 (69.82)	3.000 (76.20)	.569 (14.45)	2.248 (57.10)



THE PHOENIX COMPANY
of CHICAGO, INC.

Dimensions are subject to change without notice.

555 Pond Drive • Wood Dale, IL 60191-1192 • Toll Free (800)323-9562